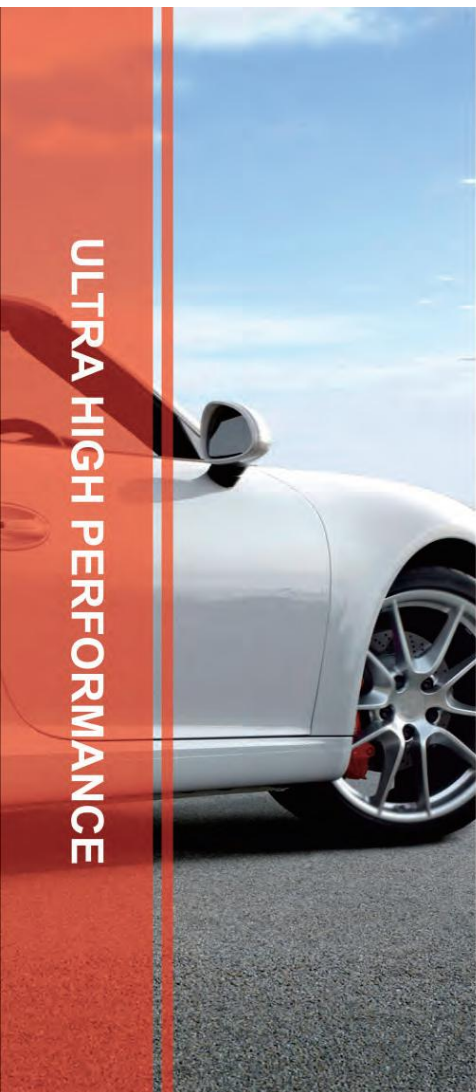


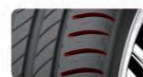
ULTRA HIGH PERFORMANCE



PRIMACY 201



Special compound design ensures a long mileage.



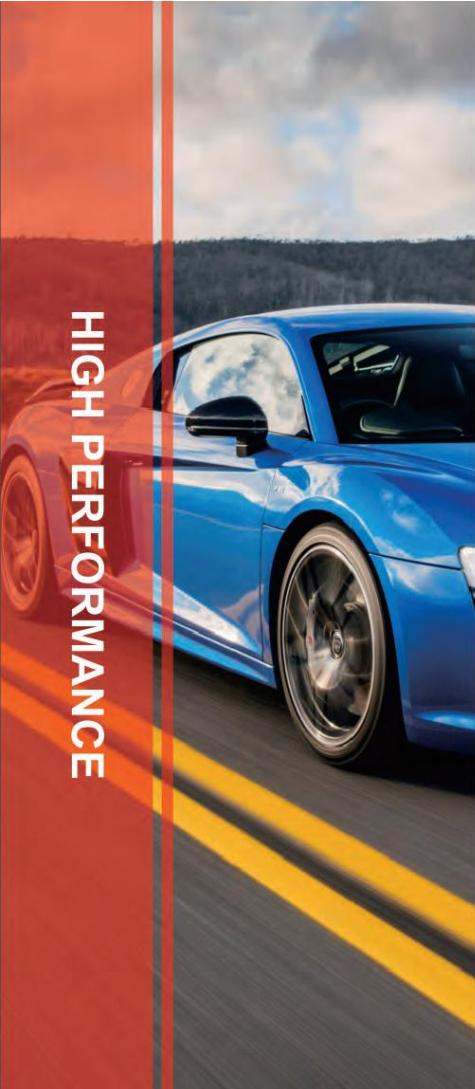
The combination of blocks provides a superior driving performance and a strong grip.



Three main grooves contribute to better water drainage and wet traction.

SIZE	LOAD INDEX	SPEED RANGE	STANDARD RIM	SECTION WINTH (mm)	OVERALL DIAMETER (mm)	MAXLOAD KG LBS	MAX PRESSURE Kpa Psi	UTQG
185/55R15	82	H	6J	6J	194	585	475/1047	320 AA
195/55R15	85	V	6J	6J	201	595	515/1135	320 AA
195/45R16	80	V	61/2J	61/2J	195	582	450/992	320 AA
195/55R16	87	V	6J	6J	201	620	545/1201	320 AA
195/60R16	89	H	6J	6J	201	640	580/1279	320 AA
205/50R16	87	V	61/2J	61/2J	214	612	545/1201	320 AA
205/40ZR17	84XL	W	71/2J	71/2J	212	596	500/1102	320 AA
205/50R17	93XL	V	61/2J	61/2J	214	638	650/1433	320 AA
215/40ZR17	87XL	W	71/2J	71/2J	218	604	545/1201	320 AA
215/45R17	91XL	W	7J	7J	213	626	615/1356	320 AA
215/50ZR17	95XL	W	7J	7J	226	648	690/1521	320 AA
215/55ZR17	94	W	7J	7J	226	668	670/1477	320 AA
225/45R17	94XL	W	71/2J	71/2J	225	634	670/1477	320 AA
225/50R17	98XL	V	7J	7J	233	658	750/1653	320 AA
225/55ZR17	101XL	W	7J	7J	233	680	825/1819	320 AA
235/45R17	97XL	W	8J	8J	236	644	730/1609	320 AA
235/50ZR17	96	W	71/2J	71/2J	245	668	710/1565	320 AA
235/55ZR17	99	W	71/2J	71/2J	245	690	775/1709	320 AA
215/35ZR18	84XL	W	71/2J	71/2J	218	607	500/1102	320 AA
225/40R18	92XL	W	8J	8J	230	637	630/1389	320 AA
225/45ZR18	95XL	W	71/2J	71/2J	225	659	690/1521	320 AA
235/40ZR18	95XL	W	81/2J	81/2J	241	645	690/1521	320 AA
235/45ZR18	98XL	W	8J	8J	236	669	750/1653	320 AA
245/40ZR18	97XL	W	81/2J	81/2J	248	653	730/1609	320 AA
245/45ZR18	100XL	W	8J	8J	243	677	800/1764	320 AA
255/35ZR18	94XL	W	9J	9J	260	635	670/1477	320 AA
245/35R20	95XL	W	81/2J	81/2J	248	680	690/1521	320 AA

HIGH PERFORMANCE



PRIMACY 202



Four wide longitudinal water-escaping grooves and spacious transverse water-escaping grooves improve water dispersion for excellent traction and braking on wet roads. Powerful with the luxurious SUV-oriented UHP tyre.



Outstanding performance on all roads with the wide tread and high groove-speration. Tranquil ride with the ideal pitch design and the variable sound frequency blocks. Special quality with good performance on anti-puncture, underlay-damage and anti-fracture from the unique sidewall protection layer.

SIZE	LOAD INDEX	SPEED RANGE	STANDARD RIM	SECTION WINTH (mm)	OVERALL DIAMETER (mm)	MAXLOAD KG LBS	MAX PRESSURE Kpa Psi	UTQG
285/50R20	116XL	V	9J	297	794	1250/2750	340/50	320 AA



ALL TERRAIN MASTER FOR SUV/LIGHT TRUCK



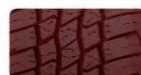
GRANDPOWER A/T




wide-angle lateral grooves ensure excellent on-and-off road performance.



Unique pattern design reduces noise generation, improves driving stability and wet grip performance.



Optimized tread compound contributes to good durability, good driving comfort, high traction on both dry and wet grounds.



SIZE	LOAD INDEX	SPEED RANGE	STANDARD RIM	SECTION WINTH (mm)	OVERALL DIAMETER (mm)	MAX LOAD SINGLE KG LBS	"MAXLOAD DUAL KG LBS"	MAX PRESSURE kpa Psi	UTQG
215/75R15	100	S	6J	216	703	800/1764	-/-	350/50	480 A B
225/70R15C	112/100	R	61/2J	228	697	1120/2470	1060/2335	450/65	480 A B
225/75R15	106XL	S	6J	223	719	950/2094	-/-	340/50	480 A B
LT235/75R15	110/107	S	61/2J	235	733	1060/2335	975/2150	450/65	480 A B
205/80R16	104XL	T	51/2J	203	734	900/1984	-/-	340/50	480 A B
235/65R16C	115/113	R	7J	240	712	1215/2679	1150/2535	475/69	480 A B
235/70R16	106	T	7J	240	736	950/2094	-/-	350/51	480 A B
LT245/75R16	120/116	Q	7J	248	774	1380/3042	1260/2778	550/80	480 A B
245/70R16	111XL	T	7J	248	750	1090/2403	-/-	340/50	480 A B
265/70R16	112	T	8J	272	778	1120/2469	-/-	350/51	480 A B
225/60R17	99	H	61/2J	228	702	775/1709	-/-	350/51	480 A B
225/65R17	102	H	61/2J	228	724	850/1874	-/-	350/51	480 A B
235/60R18	107XL	H	7J	240	739	975/2149	-/-	340/50	480 A B



H/T TIRE FOR CITY SUV

CITYCROSS H/T



Four wide longitudinal water-escaping grooves and spacious transverse water-escaping grooves water to improve water dispersion for excellent traction and braking on wet roads. Powerful with the luxurious SUV-oriented UHP tyre.



Outstanding performance on all roads with the wide tread and high groove-siperation. Tranquil ride with the ideal pitch design and the variable sound frequency blocks, under-lay-damage and anti-fracton from the unique sidewall protection layer.

SIZE	LOAD INDEX	SPEED RANGE	STANDARD RIM	SECTION WINTH (mm)	OVERALL DIAMETER (mm)	MAXLOAD KG LBS	MAX PRESSURE Kpa Psi	UTQG
235/75R15	105	S	61/2J	235	733	925/2039	300/44	480 A B
215/65R16	102XL	H	61/2J	221	686	850/1874	340/50	480 A B
215/70R16	100	T	61/2J	221	708	800/1764	300/44	480 A B
225/70R16	103	T	61/2J	228	722	875/1929	300/44	480 A B
235/60R16	100	H	7J	240	688	800/1764	300/44	480 A B
255/70R16	111	H	71/2J	260	764	1090/2403	300/44	480 A B
215/60R17	96	H	61/2J	221	690	710/1565	300/44	480 A B
225/60R17	99	V	61/2J	228	702	775/1709	300/44	480 A B
225/65R17	102	V	61/2J	228	724	850/1874	300/44	480 A B
235/65R17	108XL	H	7J	240	738	1000/2205	340/50	480 A B
245/65R17	107	H	7J	248	750	975/2149	300/44	480 A B
265/65R17	112	H	8J	272	776	1120/2469	300/44	480 A B
265/70R17	115	S	8J	272	804	1215/2679	300/44	480 A B
215/55R18	95	V	7J	226	693	690/1521	300/44	480 A B
235/55R18	100	V	71/2J	245	715	800/1764	300/44	480 A B
235/65R18	106	H	7J	240	763	950/2094	300/44	480 A B
265/70R18	116	S	8J	272	829	1250/2756	300/44	480 A B
225/55R19	99	V	7J	233	731	775/1709	300/44	480 A B
235/55R19	105XL	V	71/2J	245	741	925/2039	340/50	480 A B
245/55ZR19	103	W	71/2J	253	753	875/1929	300/44	480 A B



SUPERTRAC 301



Special compound design ensures a long mileage.



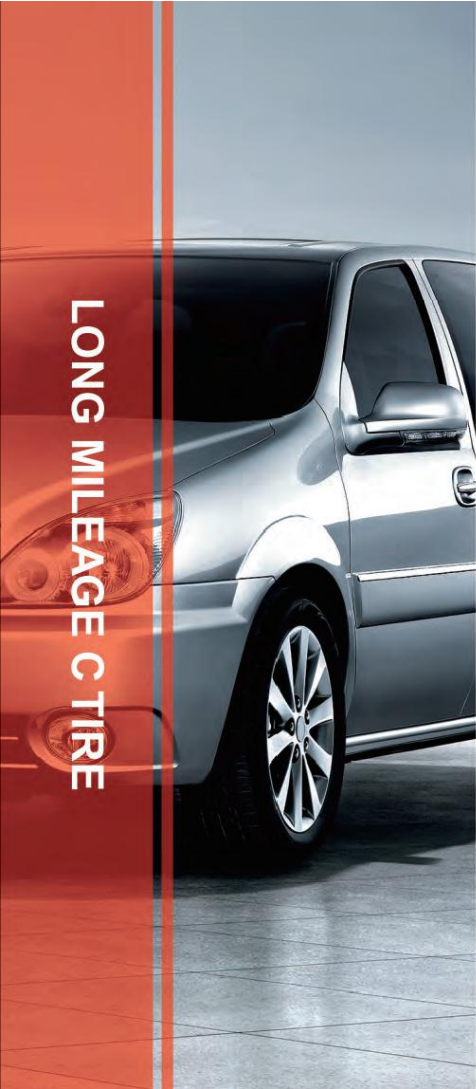
The combination of blocks provides a superior driving performance and a strong grip.



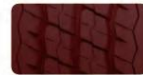
Three main grooves contribute to better water drainage and wet traction.

SIZE	LOAD INDEX	SPEED RANGE	STANDARD RIM	SECTION WINTH (mm)	OVERALL DIAMETER (mm)	MAXLOAD SINGLE KG LBS	MAX LOAD DUAL LOAD KG LBS	MAX PRESSURE Kpa Psi
155R13C	90/88	Q	4.50B	157	578	600/1323	560/1235	450/65
165R13C	94/93	R	4.50B	165	594	670/1477	650/1433	450/65
175R13C	97/95	R	5.00B	177	610	730/1609	690/1521	450/65
185R14C	102/100	Q	51/2J	189	652	850/1875	800/1765	450/65
195R14C	106/104	Q	51/2J	196	668	950/2095	900/1985	450/65
185R15C	103/102	Q	51/2J	189	677	875/1875	850/1875	450/65
195/70R15C	104/102	Q	6J	201	655	900/1984	850/1874	450/65
195R15C	106/104	R	51/2J	196	693	950/2094	900/1984	450/65
175R16C	101/99	Q	5J	178	684	825/1819	775/1709	450/65
185/75R16C	104/102	S	5J	184	684	900/1985	850/1875	475/70

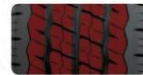




SUPERTRAC 302



Special compound design ensures a long mileage.



The combination of blocks provides a superior driving performance and a strong grip



Three main grooves contribute to better water drainage and wet traction.